

Introduction to Botany. Lecture 6

Alexey Shipunov

Minot State University

September 5, 2012

Outline

1 Questions and answers

2 Tissues

- Plant body
- Simple tissues

Outline

1 Questions and answers

2 Tissues

- Plant body
- Simple tissues

Previous final question: the answer

What is the difference between symplast and apoplast?

Previous final question: the answer

What is the difference between symplast and apoplast?

- Symplast: cytoplasm of different cells connected with plasmodesmata
- Apoplast: cell walls connected side-by-side



Tissues

Plant body

Structure of plant body

- Shoot system (aboveground part: stems, leaves, buds, flowers, fruit)
- Root system (below-ground part: main roots and branches)
- However, some plants do not have root system, primarily or secondarily (some mosses have only shoot system, some other plants have only *thallus*)



Origin of tissues and organs of plants: first steps

Definition of tissues and organs

- **Tissue** is a union of cells which have common origin, function, and similar morphology
- **Organ** is a union of different tissues which have common function(s) and origin

Simple and complex tissues

- **Simple tissues** have only one kind of cells
- **Complex tissues** have more than one cell type. This tissue type is unique for plants

Primary and secondary tissues

- **Primary tissues** originate from stem or root apex
- **Secondary tissues** originate from lateral meristems

Tissues

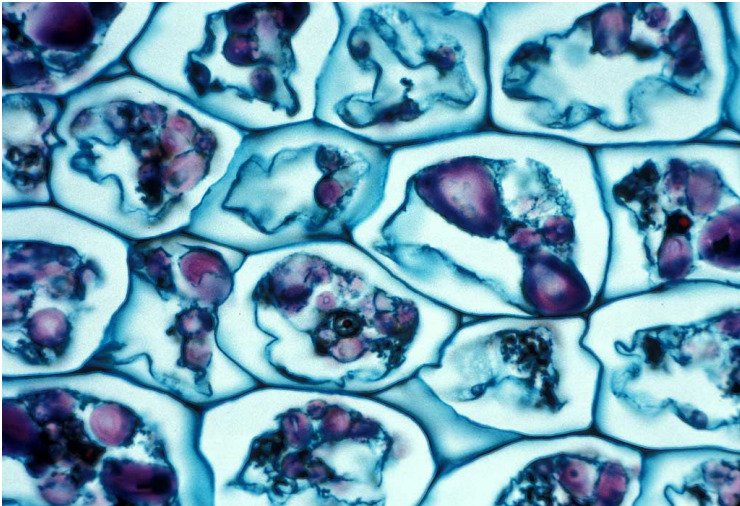
Simple tissues

Parenchyma (ground, main tissue)

- Spherical or elongated cells
- Thin primary cell wall
- Sometimes, crystal inclusion bodies
- Main functions: photosynthesis and storage



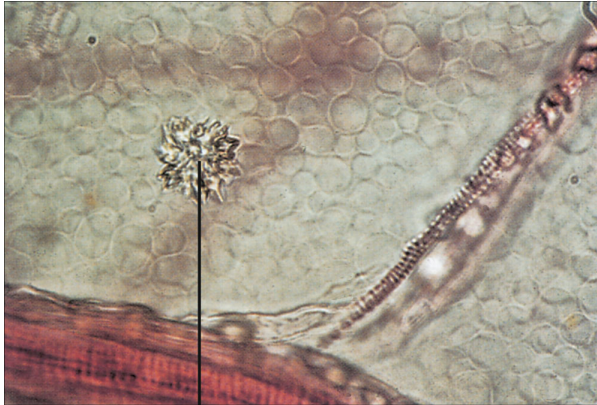
Parenchyma cells of a potato



Parenchyma cells of a potato; the central cell shows obvious nucleus with starch stained purple (LM $\times 83$)



Parenchyma with crystals

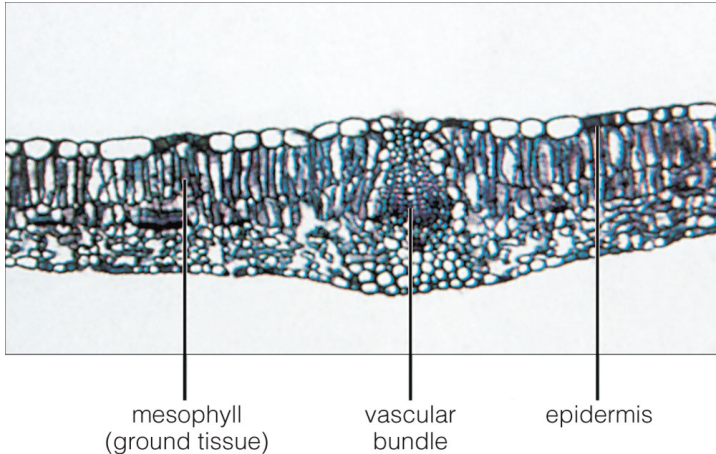


crystal

© 2006 Brooks/Cole - Thomson

Parenchyma cells often include crystals (e.g., of calcium oxalate)

Photosynthetic parenchyma



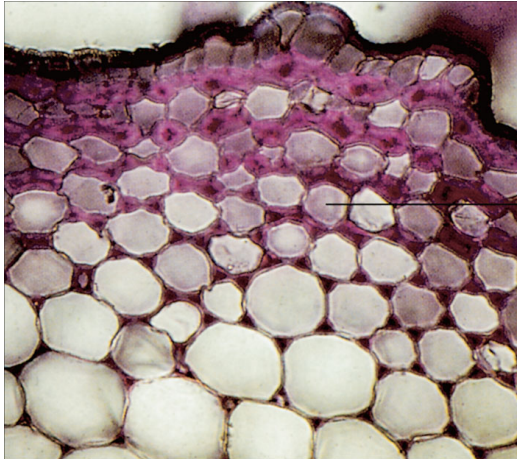
© 2006 Brooks/Cole - Thomson

Photosynthetic parenchyma in lilac (*Syringa vulgaris*) leaf

Collenchyma: living supportive tissue

- Elongated cells
- Thick primary cell wall (pectins + cellulose)
- Main functions: mechanical support of young stems and leaves

Angled collenchyma



collenchyma cell

© 2006 Brooks/Cole - Thomson

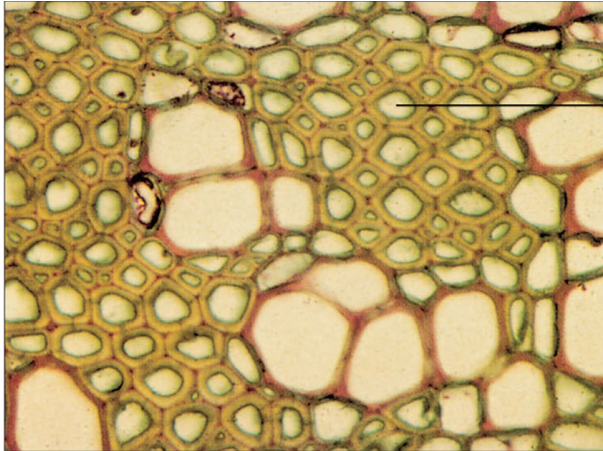
Collenchyma cells of marigold (*Calendula officinalis*)

Sclerenchyma: dead supportive tissue

- Long cells (sclerenchyma fibers) or short crystal-like cells (sclereids)
- Dead cells with thick secondary cell wall, rich of lignin
- Supports weight of older plant organs, makes fruits non-edible before they become rip, makes stems firm



Sclerenchyma fibers

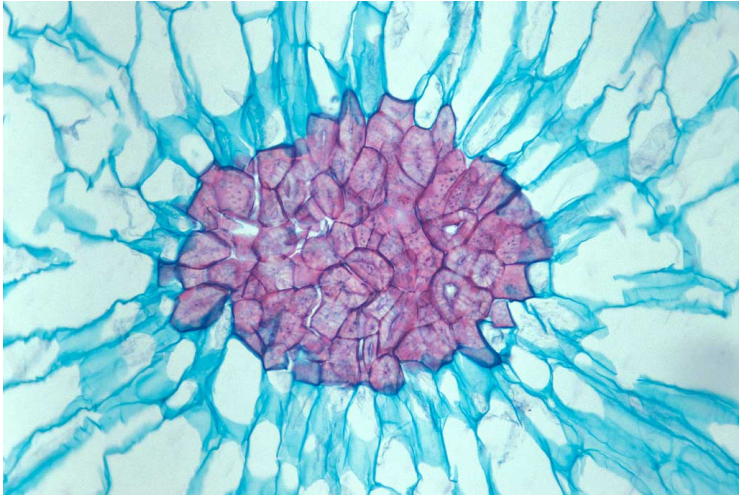


fiber

© 2006 Brooks/Cole - Thomson

Cross-section of sclerenchyma fibers in geranium (*Pelargonium* sp.)

Stone cells



Stone cells (kind of sclereids) in pear fruit (*Pyrus communis*)

Sclereids from cherry pit



Sclereids from cherry (*Prunus* sp.) pit (LM $\times 400$)

Final question (2 points)

Final question (2 points)

How plant tissues are different from animal tissues?

Summary

- The structure of plant body, its organs and tissues is a result of land colonization
- **Complex tissues** have different cell types, **secondary tissues** originate from lateral meristems (i.e., cambium)
- **Parenchyma**, or ground tissue, is a main component of young plant organs
- **Collenchyma** and **sclerenchyma** are simple supportive tissues
- **Epidermis** is a complex tissue which includes stomata



For Further Reading



J. E. Bidlack, Sh. H. Jansky.
Stern's introductory plant biology. 12th edition.
McGraw-Hill, 2011.
Chapter 4.



Th. L. Rost, M. G. Barbour, C. R. Stocking, T. M. Murphy.
Plant Biology. 2nd edition.
Thomson Brooks/Cole, 2006.
Chapter 4.

