

Introduction to Botany. Lecture 32

Alexey Shipunov

Minot State University

November 25, 2013



Outline

- 1 Questions and answers
- 2 Thickening and branching
 - Branching
 - Secondary stem



- 1 Questions and answers
- 2 Thickening and branching
 - Branching
 - Secondary stem

Previous final question: the answer

What is a heterospory?



Previous final question: the answer

What is a heterospory?

- Male spores (microspores) and female spores (megaspores) to produce male and female gametophytes, respectively.



Thickening and branching

Branching

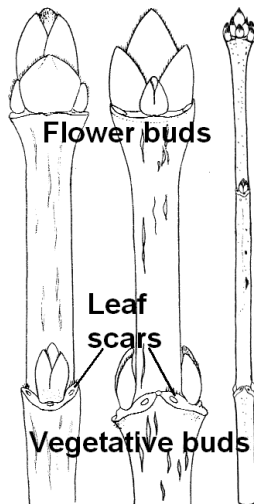


Winter shoot

- 1 Vegetative, flower, and mixed buds
- 2 Leaf and bud scars
- 3 Leaf traces



Winter shoot of maple (*Acer platanoides*)

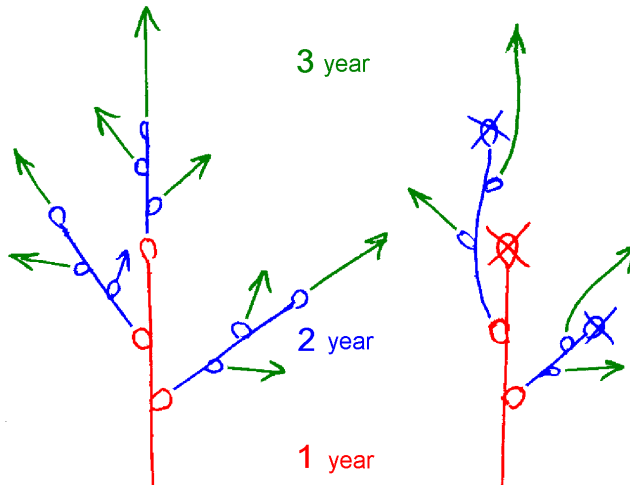


Types of branching

- **Monopodial:** buds do not degrade, all shoots continue to grow
- **Sympodial:** terminal buds degrade, the lateral shoot closest to terminal bud becomes terminal shoot



Monopodial (left) and sympodial branching

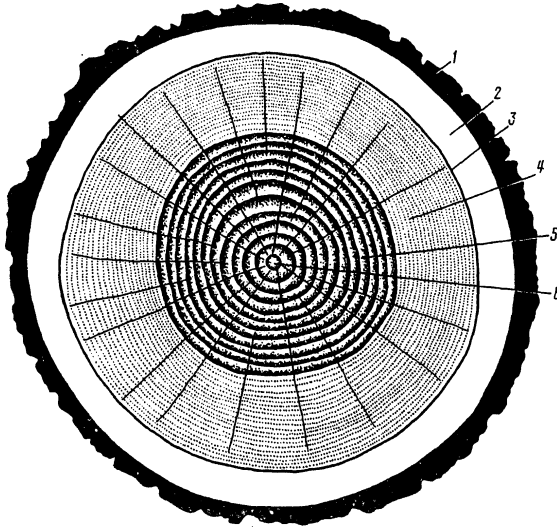


Thickening and branching

Secondary stem



Secondary stem = bark + wood



1 cork, 2 bast, 1 + 2 = bark, 3 cambium, 4 + 5 wood, 4 **sapwood**, 5 **heartwood**, 6 pith (if any)



Bark, cork, periderm and wood

- **Bark** = secondary phloem (bast) + periderm + (optionally) epidermis
- **Periderm** = phellem (cork) + cork cambium (phellogen) + phelloderm
- **Wood** = trunk — bark, or simply secondary xylem + all remnants of central primary tissues



Cork cambium and origin of bark

- **Bark** is everything outside vascular cambium, therefore, bark = secondary phloem + periderm
- Each year new layer of cork cambium appear from parenchyma cells of secondary phloem
- Consequently, bark consists of multiple and mostly uneven layers



Renewal of bark in sea buckthorn (*Hippophaë rhamnoides*)

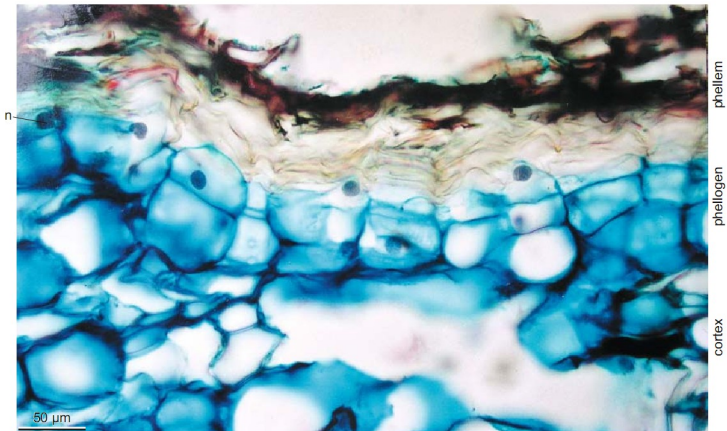


Periderm

- Periderm is the product of cork cambium
- 99% of periderm is a **phellem** (cork), thick outside layer
- **Phelloderm** is a tiny layer of living cells inside of cork cambium (phellogen). Phelloderm is sometimes absent.



Formation of periderm zone in medlar (*Mespilus germanica*)



No phelloderm

Lenticels

- **Lenticels** are specialized regions of periderm; they supply stem cells with oxygen
- In order to produce lenticel, some cells of cork cambium divide and grow much faster than others



Lenticel of elderberry (*Sambucus* sp.)

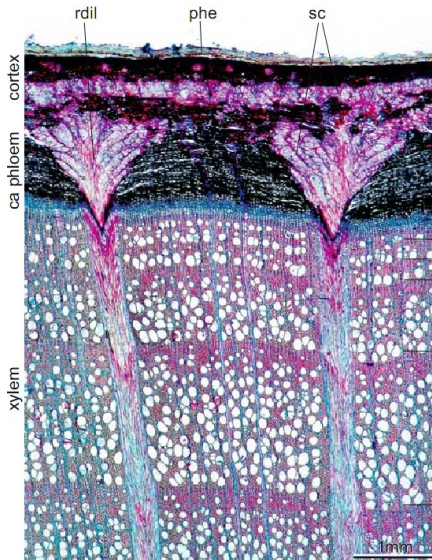


Secondary phloem (bast)

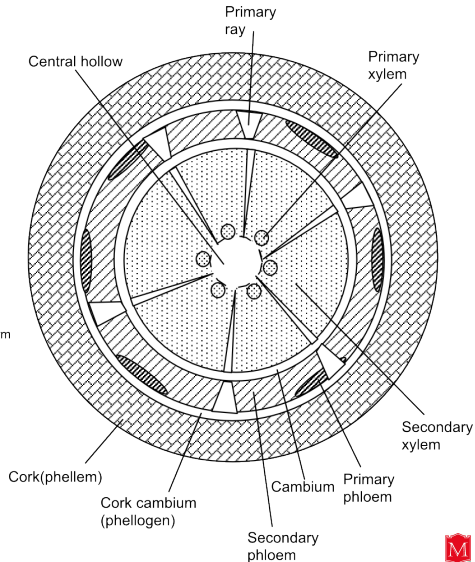
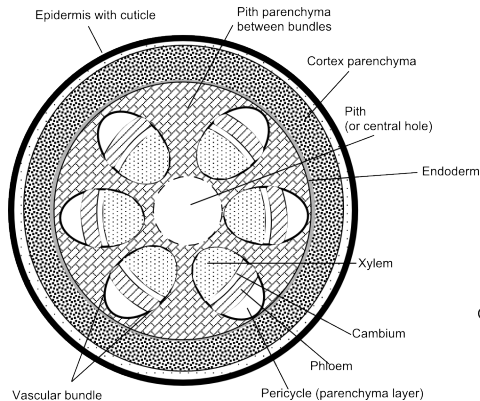
- Forms outside vascular cambium
- Rich of fibers
- Does not form annual rings
- Has rays of parenchyma cells, sometimes wedge-shaped (**dilated**)



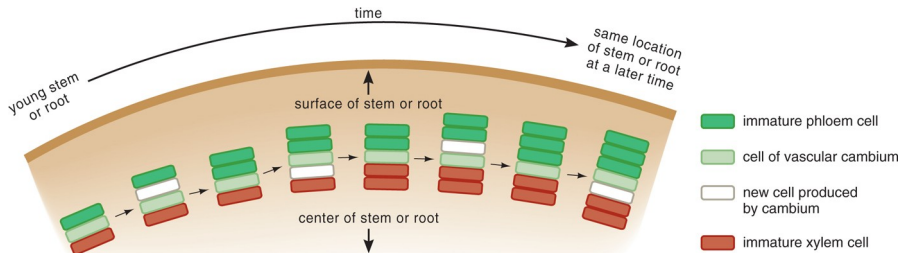
Dilated rays in beech (*Fagus* sp.) stem



Primary and secondary stems (scheme)



How cambium works

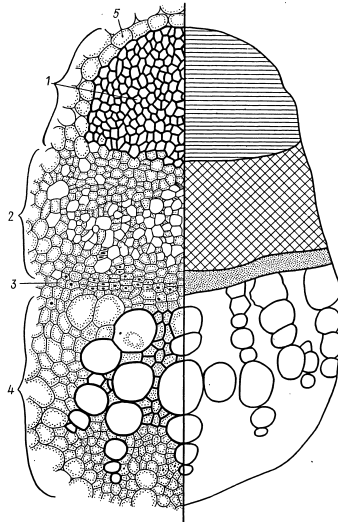


Final question (2 points)



Final question (2 points)

Where is a cambium?



Summary

- **Sympodial** branching is evolutionary more advanced than **monopodial**
- **Bark** consists of secondary phloem and cork
- **Wood** is a secondary xylem



For Further Reading



A. Shipunov.

Introduction to Botany [Electronic resource].

2010—onwards.

Mode of access:

http://ashipunov.info/shipunov/school/biol_154



Th. L. Rost, M. G. Barbour, C. R. Stocking, T. M. Murphy.

Plant Biology. 2nd edition.

Thomson Brooks/Cole, 2006.

Chapter 5.