

Introduction to Botany. Lecture 20

Alexey Shipunov

Minot State University

October 17, 2016



Outline

1 Questions and answers

- Quiz

2 Tissues

- Origin of tissues
- Step four: pipes. Vascular tissues
 - Xylem
 - Phloem
- Secondary cover: periderm



1 Questions and answers

- Quiz

2 Tissues

- Origin of tissues
- Step four: pipes. Vascular tissues
 - Xylem
 - Phloem
- Secondary cover: periderm



Questions and answers

Quiz



Final question (2 points)

What are differences between collenchyma and sclerenchyma?



Final question (2 points)

What are differences between collenchyma and sclerenchyma?

- Alive vs. dead
- Primary vs. secondary cell walls



Tissues

Origin of tissues

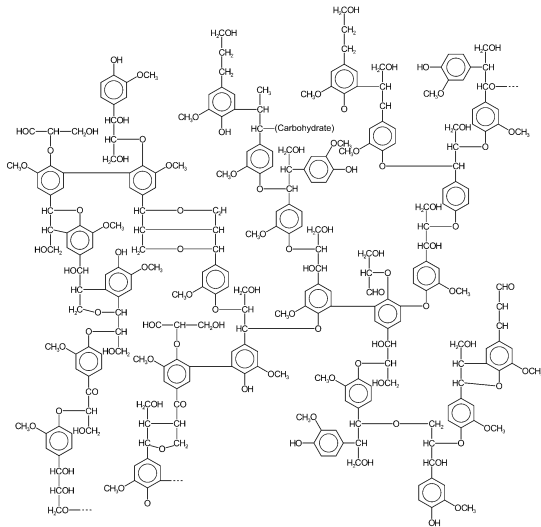


Origin of tissues and organs of plants: first steps

- Plants were pushed on land for many reasons, including competition
- First challenge: drying. Response: **epidermis** and **parenchyma**.
- Second challenge: new level of competition. Response: growing up!
- Problem: big weight. Response: **collenchyma**.
- Competition grows, plants growing even higher. Weight grows. They also need to get rid of turgor dependency. Response: use lignin not only for epidermis surface (cuticle) but also for secondary cell walls—**sclerenchyma**.
- Competition grows again, plants need to grow faster. Solution: **meristems**.
- Size of plant is too big for plasmodesmata transportations. Solution: vascular tissues, **xylem** and **phloem**.



Lignin



Phenolic and other “plastic” compounds (e.g., lignin) were initially developed for spore distribution with a wind, then used in cuticle, then in the secondary



Tissues

Step four: pipes. Vascular tissues

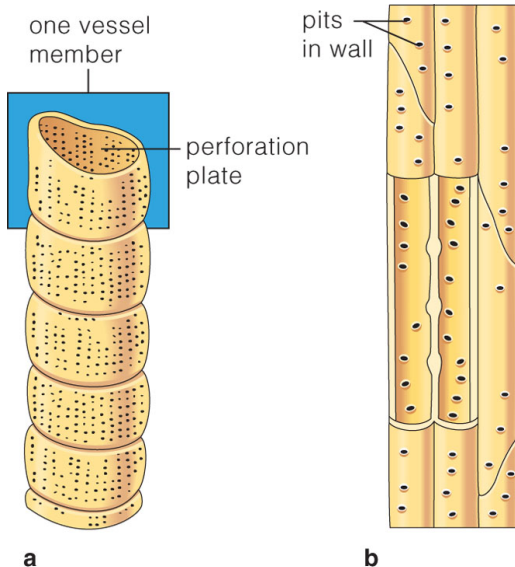


Vascular tissues: Xylem

- Occurs in vascular bundles or vascular cylinder
- Types of cells: **tracheary elements** (tracheids and vessel members), **fibers**, and **parenchyma**
- Tracheids have pits; vessel members have perforations; all of them are dead cells
- Gymnosperms have only tracheids; flowering plants have tracheids + vessel elements together
- In flowering plants, primary xylem has mostly tracheids and vessels with scalariform perforations; secondary xylem has mostly vessels with open perforations
- Xylem elements (except parenchyma) are rich of lignin and are main components of wood
- Main functions: water transport and mechanical support



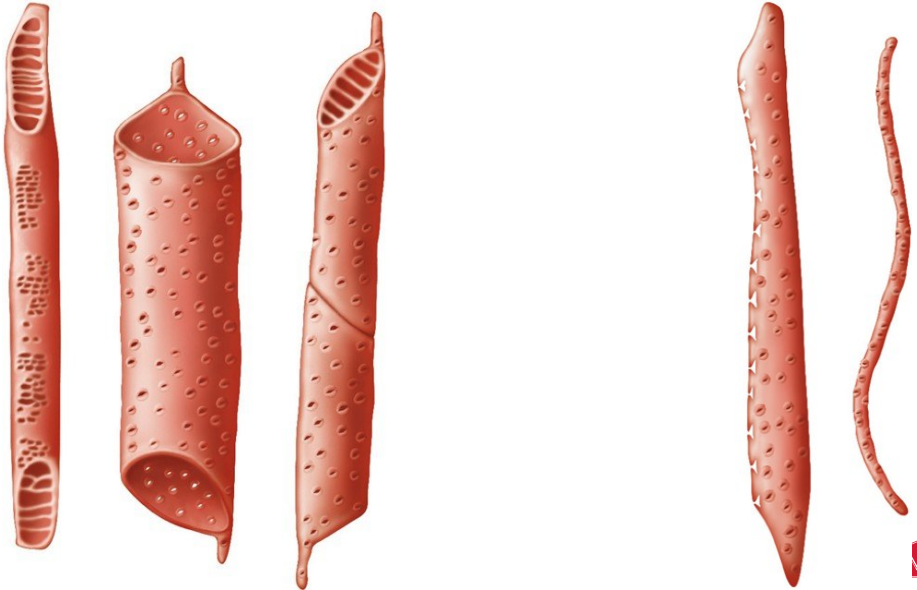
Vessel members vs. Tracheids



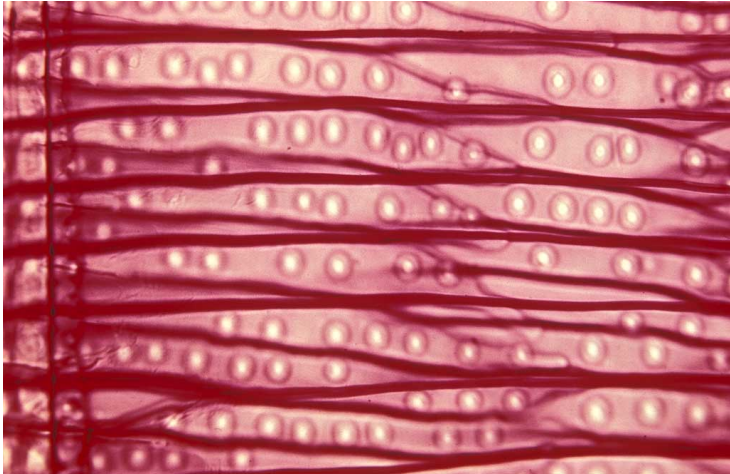
© 2006 Brooks/Cole - Thomson



Vessel members vs. Tracheids



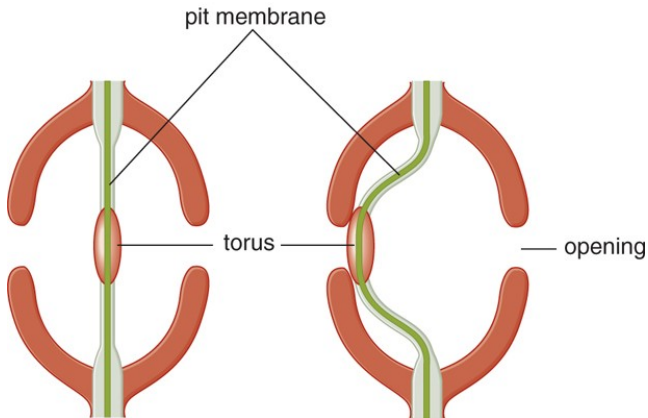
Tracheids



Pine (*Pinus* sp.) tracheids with pits



Pit is NOT a direct connection



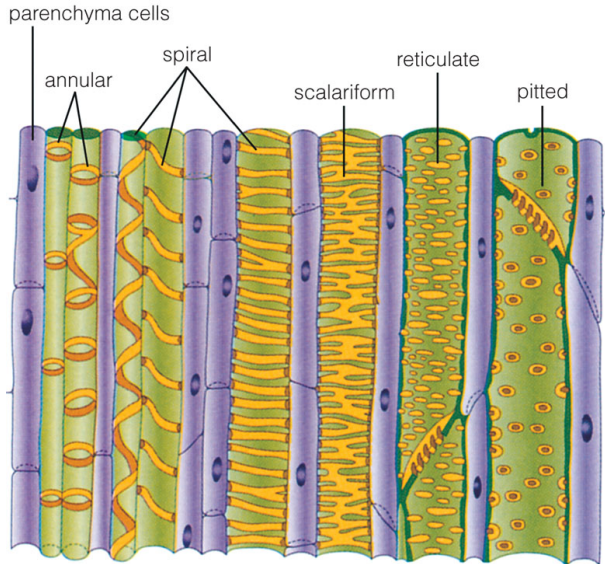
Vessels



Ash (*Fraxinus americana*) secondary xylem
with vessels (LM $\times 26$)



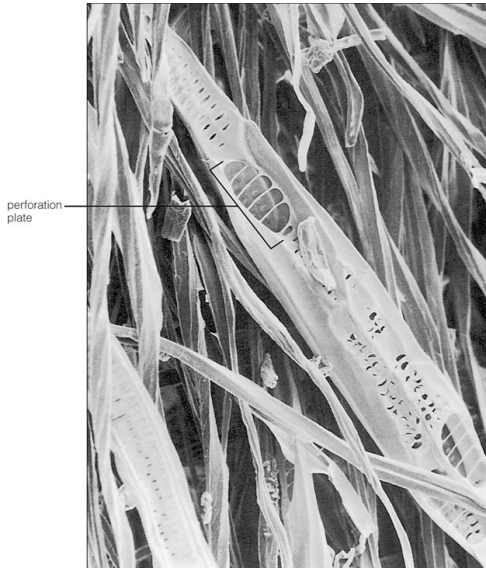
Perforations



© 2006 Brooks/Cole - Thomson



Scalariform perforations: direct connections



© 2006 Brooks/Cole - Thomson

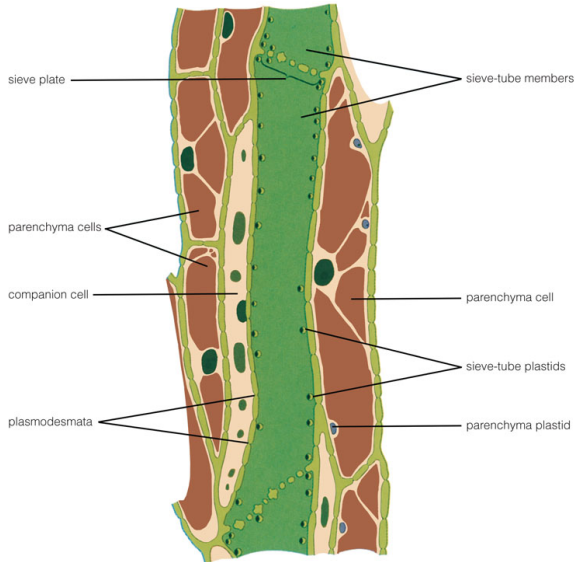


Phloem

- Usually occurs adjacent to a xylem
- Types of cells: **sieve tube cells**, **companion cells**, **fibers** and **parenchyma**
- Sieve tube cells have plastids and perforation (sieve) plates between cells but no nuclei, companion cells have nuclei
- However, in gymnosperms there are *no* companion cells and sieve tube cells *have* nuclei
- Secondary phloem usually has more fibers than primary phloem
- Main functions: sugar transport and mechanical support



Phloem cell types



© 2006 Brooks/Cole - Thomson



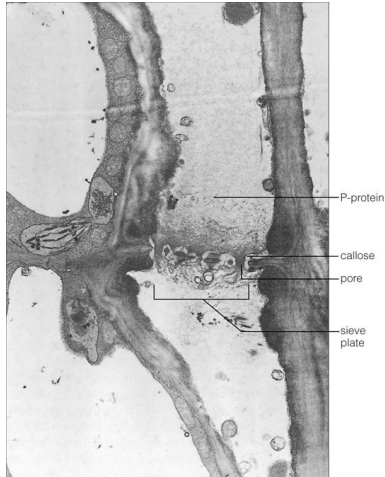
Sieve tubes and phloem parenchyma



© 2006 Brooks/Cole - Thomson



Perforation (sieve) plate

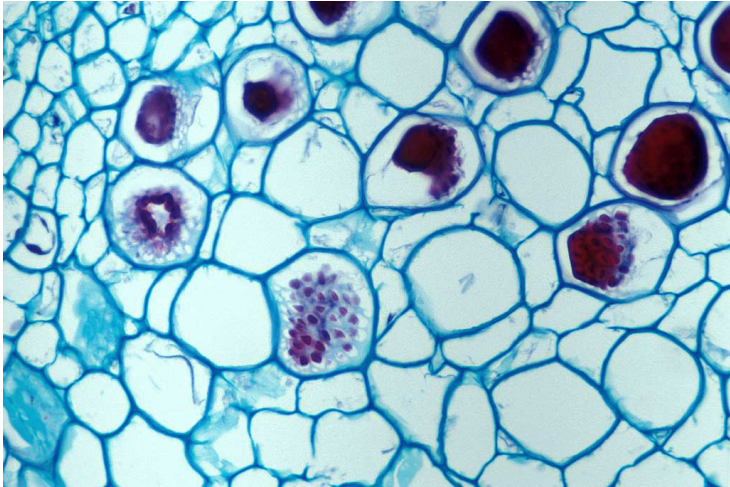


© 2006 Brooks/Cole - Thomson

Cross-section (TEM)



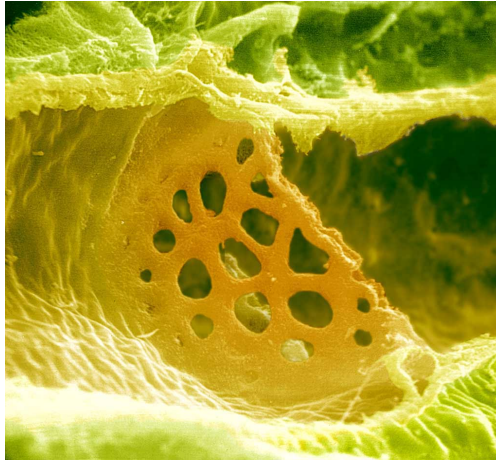
Perforation plates: frontal view



Frontal view (LM)



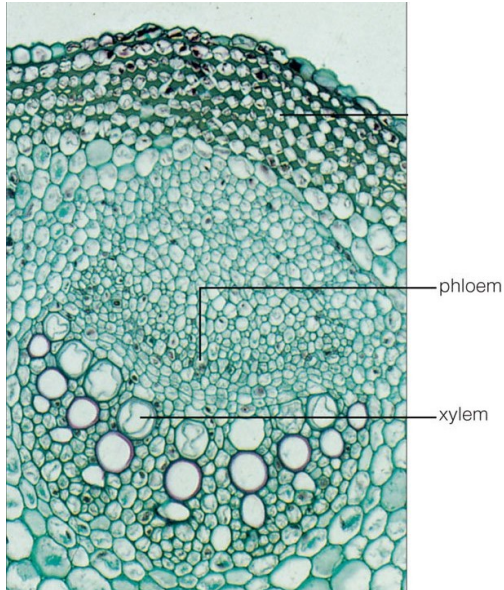
Plates: pores



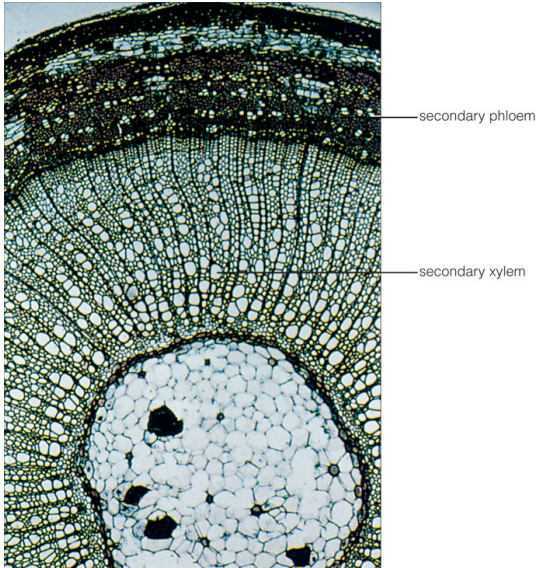
Sieve plate, a pore in the end wall of a sieve-tube member, through which phloem sap flows (SEM $\times 4800$)



Primary vascular tissues



Secondary vascular tissues



© 2006 Brooks/Cole - Thomson



Tissues

Secondary cover: periderm

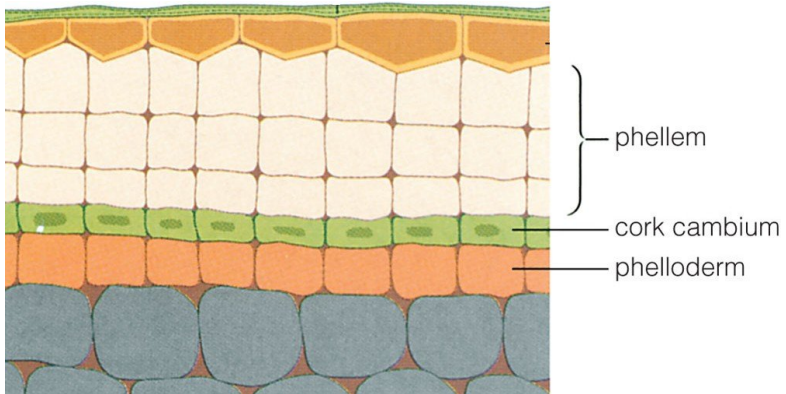


Secondary dermal tissue: Periderm

- Secondary dermal tissue
- Arises inside the stem ground tissue (cortex), closer to surface
- Complex tissue: includes phellem (cork in the strict sense), cork cambium (phellogen), and phelloderm
- Old periderm includes some other tissues and becomes a bark
- Cells of phellem are dead cells rich of suberin
- Main function is defense



Three cell types of periderm



Cork cambium is another lateral meristem; *phellem* and *phelloderm* are main components of periderm

Summary

Xylem vs. phloem:

- **State:** dead vs. living cells
- **Transport:** water vs. sugar
- **Direction:** up vs. down
- **Biomass:** big vs. small



Final question (1 point)



Final question (1 point)

What is a difference between tracheids and vessels?



For Further Reading



A. Shipunov.

Introduction to Botany [Electronic resource].

2016.

Mode of access:

http://ashipunov.info/shipunov/school/biol_154

