

# Introduction to Botany

Alexey Shipunov

Minot State University

Lecture 26

# Outline

## 1 Questions and answers

- Quiz

## 2 Root

- Root morphology
- Anatomy and development of roots
- Anatomy and development of roots
- Origins of root tissues
- Water transport in roots
- Diversity of roots
- Diversity of roots

# Outline

## 1 Questions and answers

- Quiz

## 2 Root

- Root morphology
- Anatomy and development of roots
- Anatomy and development of roots
- Origins of root tissues
- Water transport in roots
- Diversity of roots
- Diversity of roots

# Questions and answers

## Quiz

# Quizes

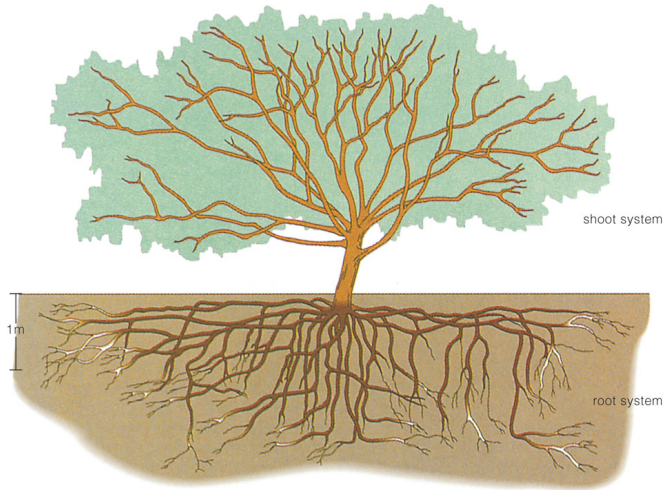
...

● ...

# Root

## Root morphology

# Root system and shoot system



© 2006 Brooks/Cole - Thomson

# Definition and functions

- Axial vegetative organ with a function of soil nutrition
- Other functions:
  - A Anchor
  - B Synthesis
  - C Storage
  - D Communication
- Features:
  - A No leaves
  - B Geotropic growth
  - C Locates in soil or water



# Types of roots

- Primary root: originates from root of seedling
- Secondary (lateral) roots: originate from primary roots
- Adventitious roots: originate from stems

# Primary root



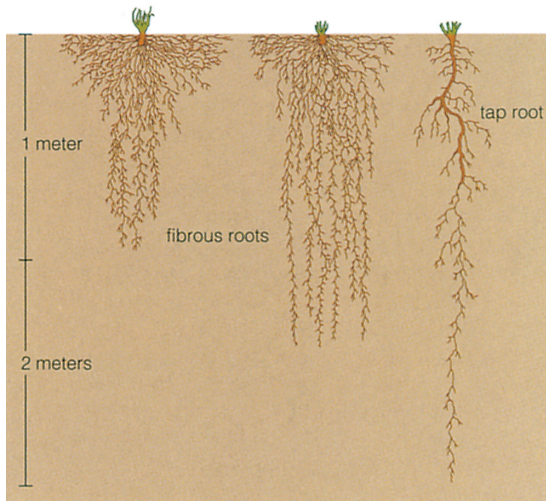
# Adventitious roots



# Root systems

- Tap root system: with well developed primary root (most seed plants)
- Fibrous root system: without clearly visible primary root (monocots, ferns)

# Fibrous and tap root systems

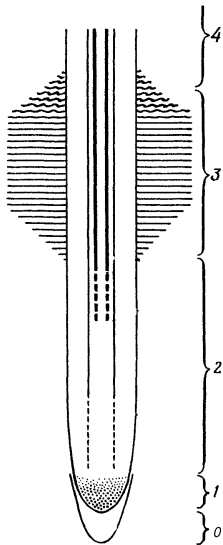


© 2006 Brooks/Cole - Thomson

# Root

## Anatomy and development of roots

# Root zones



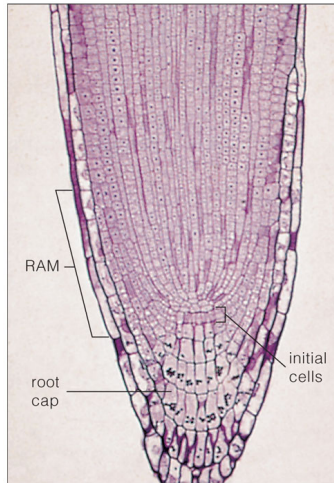
- Root cap
- Root meristem
- Elongation zone
- Absorption zone
- Maturation zone

# Structure of root tip

- Initial cells (quiescent center)
- RAM
- Root tip growing both forward (root cap) and backward (other root tissues), initial cells determine the direction of growth
- If root tip touch barrier, it starts to make rotating movements



# Root tip



© 2006 Brooks/Cole - Thomson

# Periphery of root

- Rhizodermis (rhizoderm, root epidermis): fast-degrading cells
- Cortex, which includes also:
  - Endodermis (endoderm): 1-cell layer with specialized cell walls, located on the border with vascular cylinder
  - And (sometimes) exodermis (exoderm): similar to endoderm but located just under rhizodermis
- In some plants (i.e., orchids), cortex modified into velamen

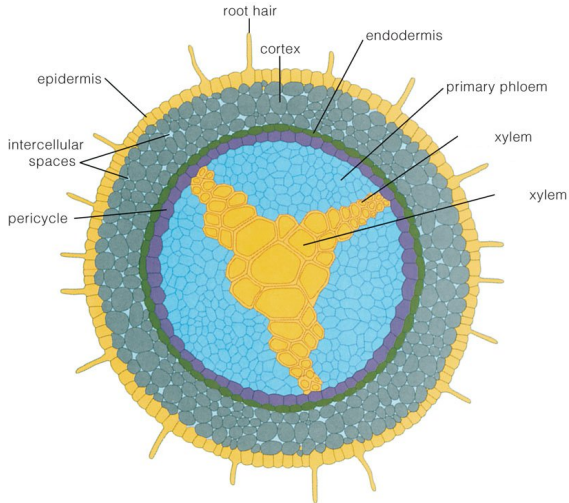
# Root center: vascular cylinder

- Pericycle
- Vascular tissues located in the center
- No central hollow, central parenchyma presents in monocot roots

# Root

## Anatomy and development of roots

# Anatomy of root

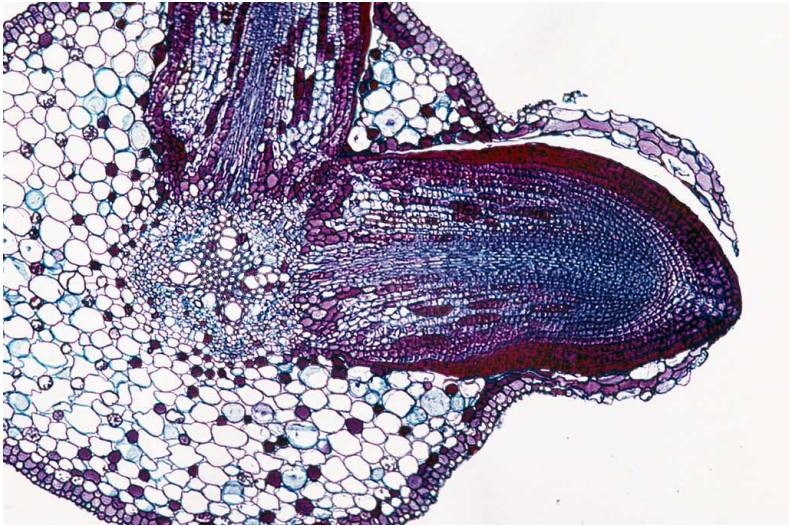


© 2006 Brooks/Cole - Thomson

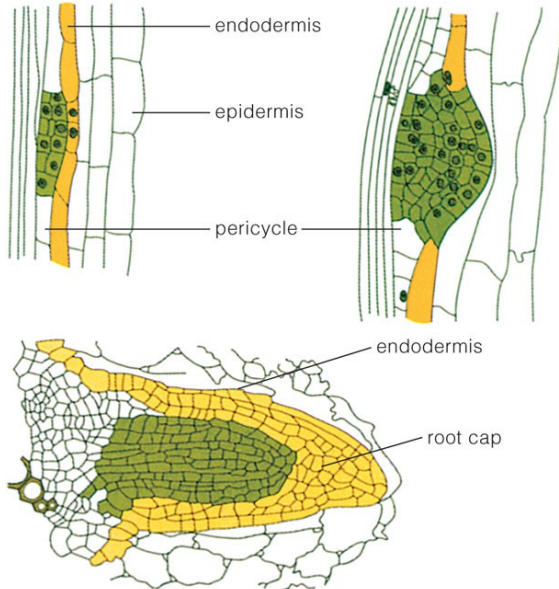
# Pericycle

- Long-lived parenchyma cells served as half-meristem
- Initiates development of lateral roots
- Contributes to vascular cambium
- Contributes to cork cambium

# Development of lateral roots



# Development of lateral roots (step by step)

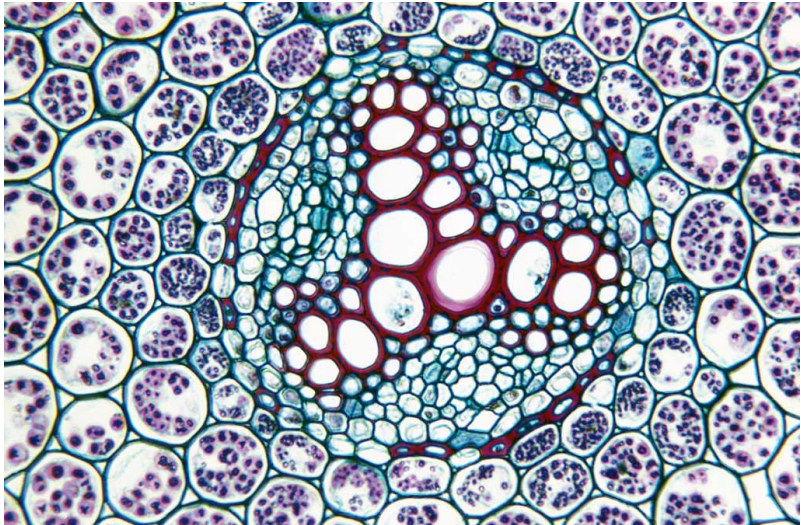




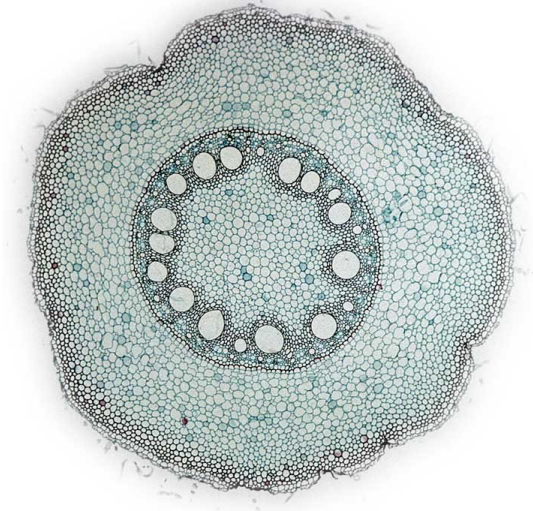
# Vascular bundle

- Only one!
- Has radial (star-like) symmetry
- Xylem arranged in rays, multiple in monocots, 2-4 in other plants

# Radial structure of root vascular bundle in buttercup (*Ranunculus* sp.)



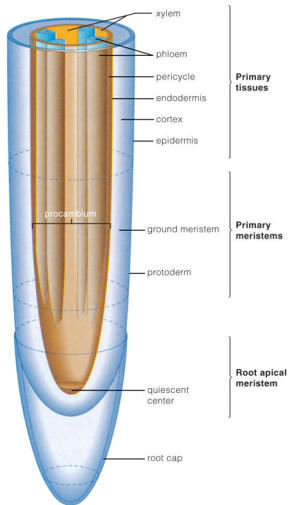
# Root of monocot (*Zea mays*)



# Root

## Origins of root tissues

# Development of tissues



© 2005 Brooks/Cole - Thomson

In essence, development of tissues in root is analogous to stem.

# Root

## Water transport in roots

# Rhizodermis and osmosis

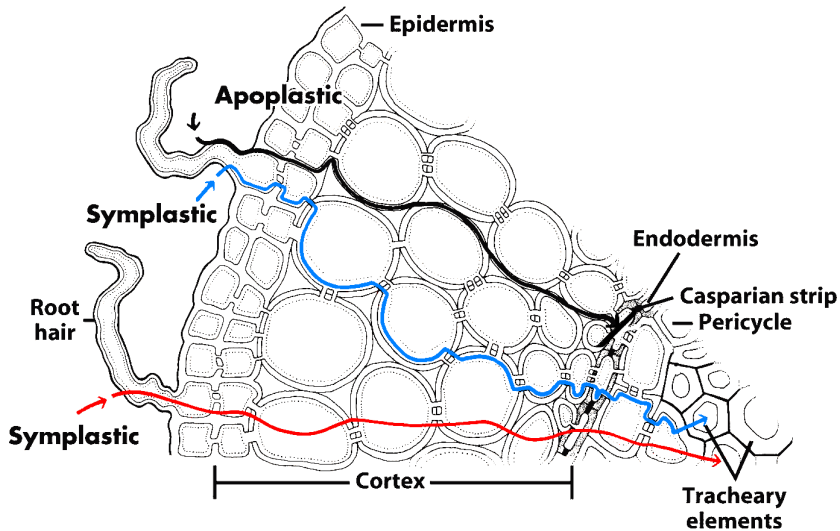
- The existence of root hairs dramatically increases the surface of absorption
- Every root hair cell increase the internal concentration of large molecules, typically organic acids
- Process of concentration requires ATP
- As a result, osmosis water flow starts from soil to root cells

# Endodermis and root pressure

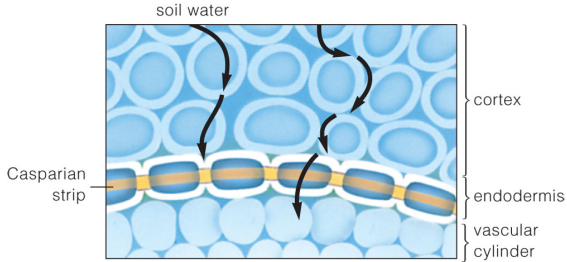
- From rhizodermis to endodermis, transport of water is both symplastic and apoplastic
- In the endodermis cells, Caspari stripes stop apoplastic transport and therefore forced symplastic transport
- This is a high-energetic process requires ATP
- As a result, water will be pushed up from root: this is the root pressure



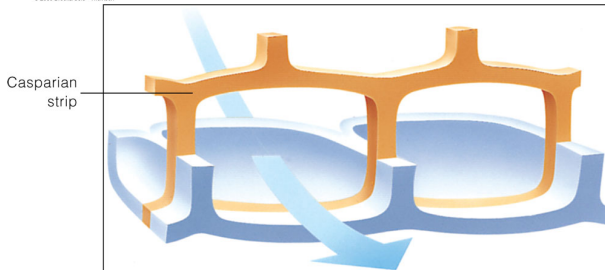
# Apoplastic and symplastic transport in the root



# Casparian strips

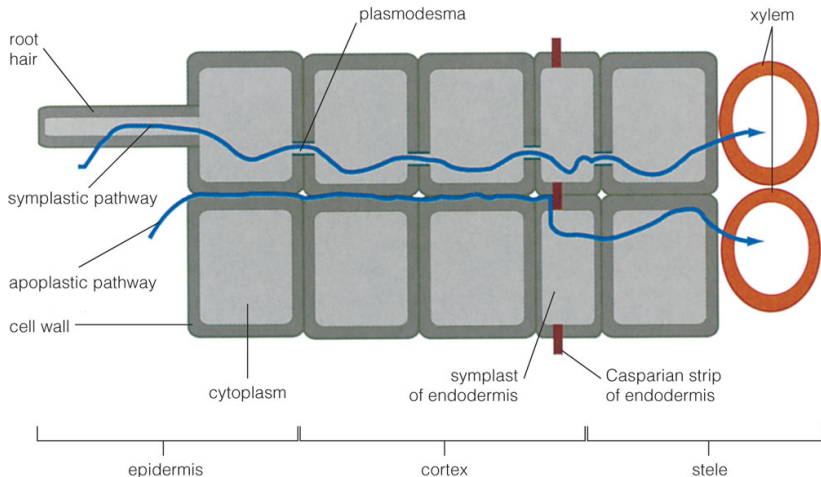


© 2006 Brooks/Cole - Thomson



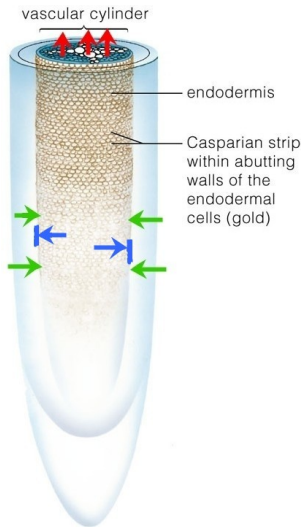
© 2006 Brooks/Cole - Thomson

# How Casparian strips are working



© 2006 Brooks/Cole - Thomson

# Origin of root pressure



# Water flow in plants

- Plants need water:
  - To supply photosynthesis
  - To cool via transpiration
  - To obtain required minerals
- Water flows because of:
  - Root pressure
  - Capillarity force
  - Transpiration “suction”

# Root

## Diversity of roots

# Modifications of roots

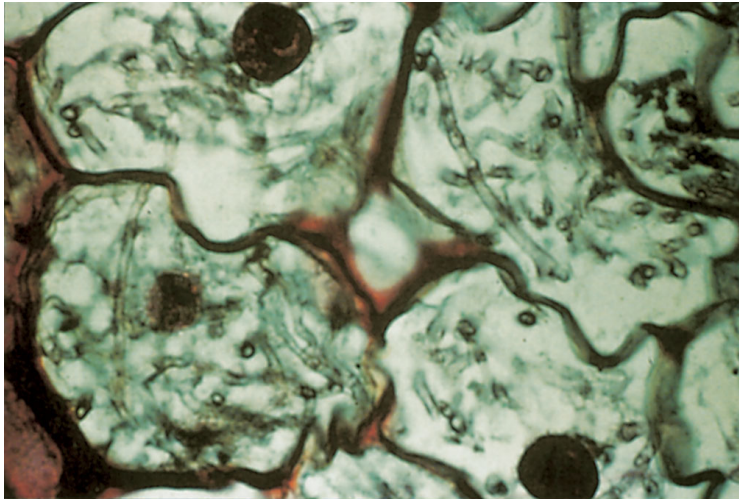
- Adventive buds with root origin (many plants)
- Mycorrhizae: endotrophic (grasses, orchids) and ectotrophic (trees)
- Haustoria (parasites like *Cuscuta*—dodder plant)
- Root nodules (legumes, Fabaceae family)
- Contractile roots (*Hyacinthus* spp.—hyacinth, *Taraxacum* spp.—dandelion)
- Storage roots (*Daucus carota*—carrot, *Armoracia officinalis*—horseradish)
- Supportive roots (many tropical plants)
- Defensive, spiny roots (ivy)
- Photosynthetic roots (some orchids)

# Root

## Diversity of roots

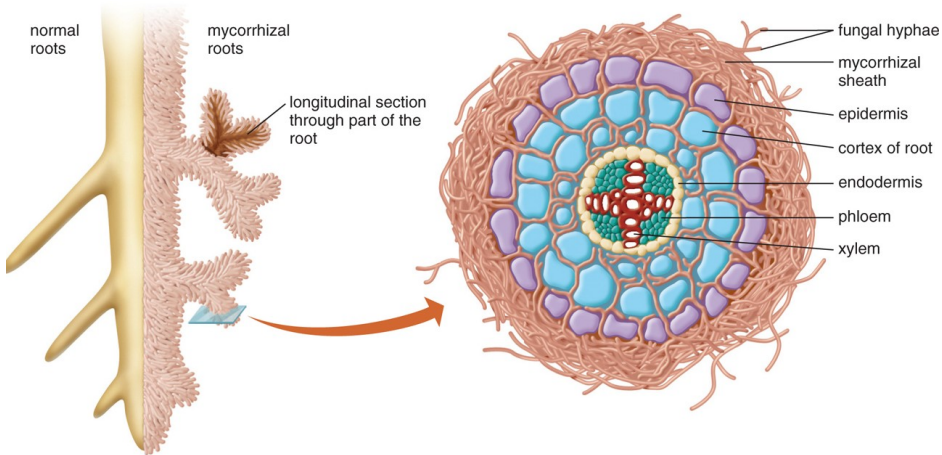


# Endotrophic mycorrhizae in *Corallorhiza* orchid

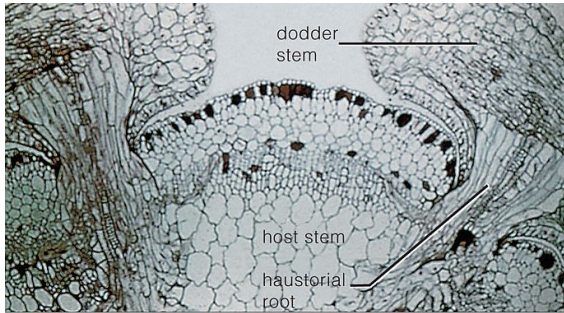


© 2006 Brooks/Cole - Thomson

# Ectotrophic mycorrhizae of trees



# Haustoria of *Cuscuta* (dodder)



# Nodulated roots of soybean (*Glycine max*)



# Contractile roots of *Hyacinthus orientalis*



© 2006 Brooks/Cole - Thomson

# Supportive roots of mangrove plants





# Supportive roots of *Pandanus* sp.



# Defensive spiny roots of ivy (*Hedera* sp.)





# Photosynthetic aerial roots of orchids



# Table of modifications

Function	Stem	Leaf	Root
Expansion	...	Plantlets	Adventive buds
Storage	...	Succulent leaves	Storage roots
Photosynthesis	...	DEFAULT	Some aerial roots
Defense	...	Spines, scale	Root spines
Support	DEFAULT	Leaf tendrils	Aerial and contractile roots
Interactions	...	Traps, "sticky tapes", urns	Mycorrhizae, haustoria, nodulated roots

# Summary

- Vascular tissues of root is a modified protostele or solenostele (in monocots).
- Root hairs, Casparian strips, capillarity and transpiration work together to make water flow in plant.
- Root-related part of water flow is the **root pressure**.
- Roots have not less modifications than leaves.

# For Further Reading



A. Shipunov.

*Introduction to Botany* [Electronic resource].

Mode of access:

[http://ashipunov.info/shipunov/school/biol\\_154](http://ashipunov.info/shipunov/school/biol_154)