

Biogeography. Lecture 34

Alexey Shipunov

Minot State University

May 5, 2014



Outline

Biogeography of the World

Biogeography of Indo-Pacific region

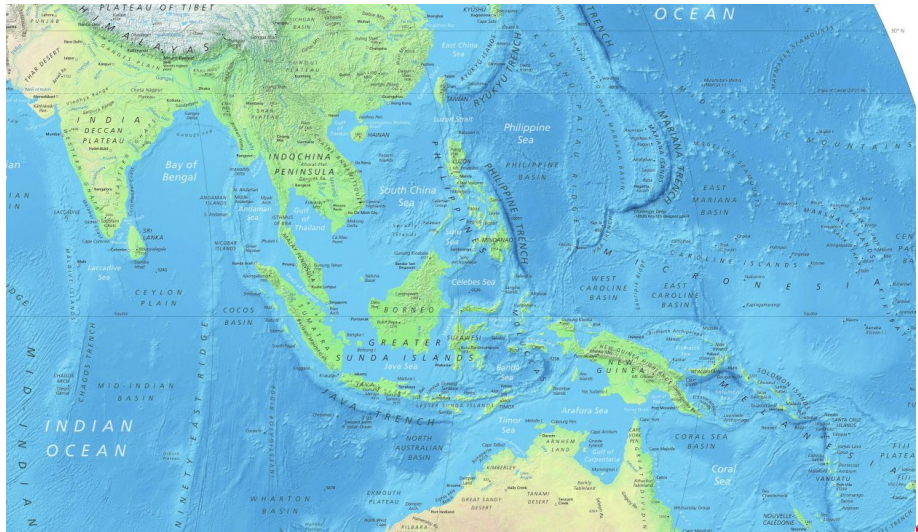


Biogeography of the World

Biogeography of Indo-Pacific region



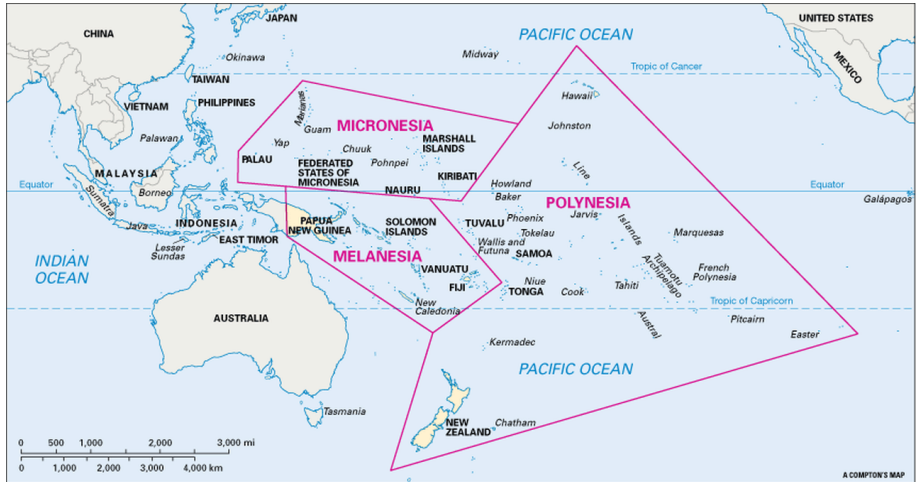
Western Indo-Pacific



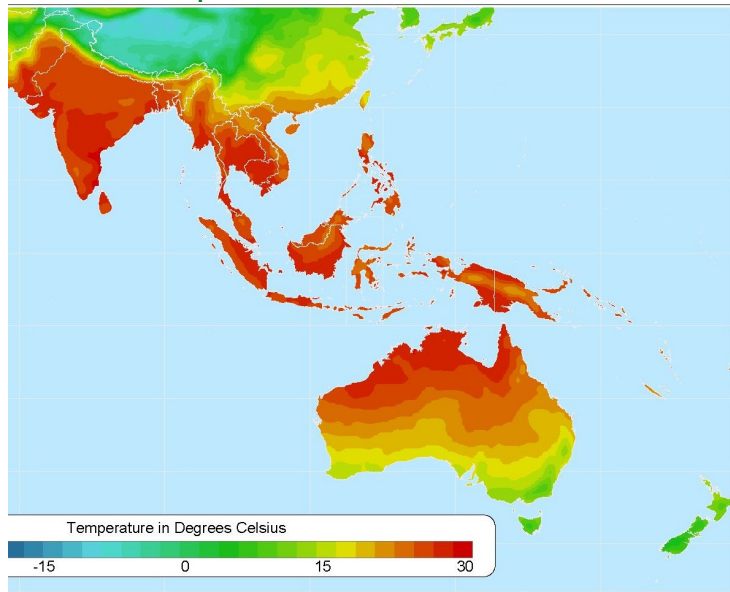
This map illustrates the Pacific Ocean's tectonic structure. Key features include:

- Tectonic Plates:** The Pacific Plate is the central focus, with surrounding plates like the North Pacific, Central Pacific, and East Pacific also labeled.
- Fracture Zones:** Major zones such as the Mouldokai, Clarion, Galapagos, and Marquesas are shown as dashed lines across the ocean floor.
- Island Groups:** Numerous island chains are depicted, including the Hawaiian Islands, Line Islands, Phoenix Islands, Cook Islands, and the Tonga Islands.
- Geographic Labels:** The map includes labels for various regions and islands, such as the Hawaiian Islands, Line Islands, Phoenix Islands, Cook Islands, and the Tonga Islands.
- Coordinates:** The map shows latitude and longitude lines, with specific coordinates marked for certain locations.

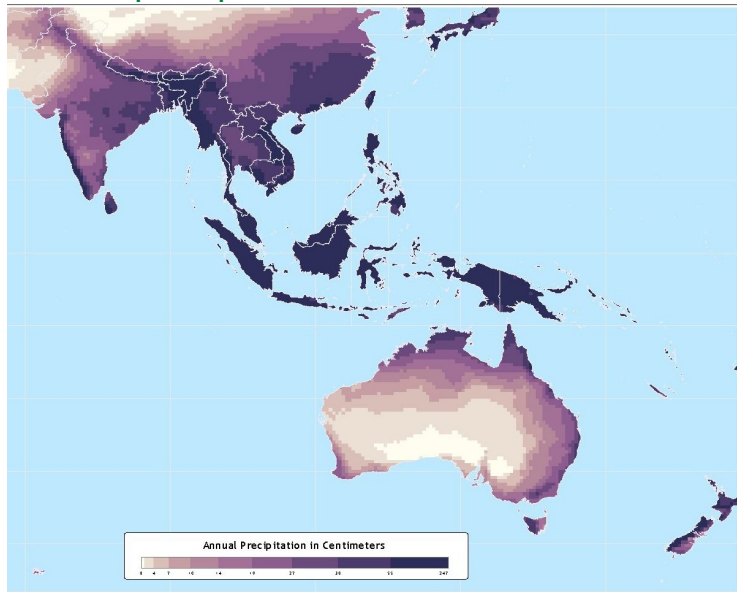
Oceania cultures



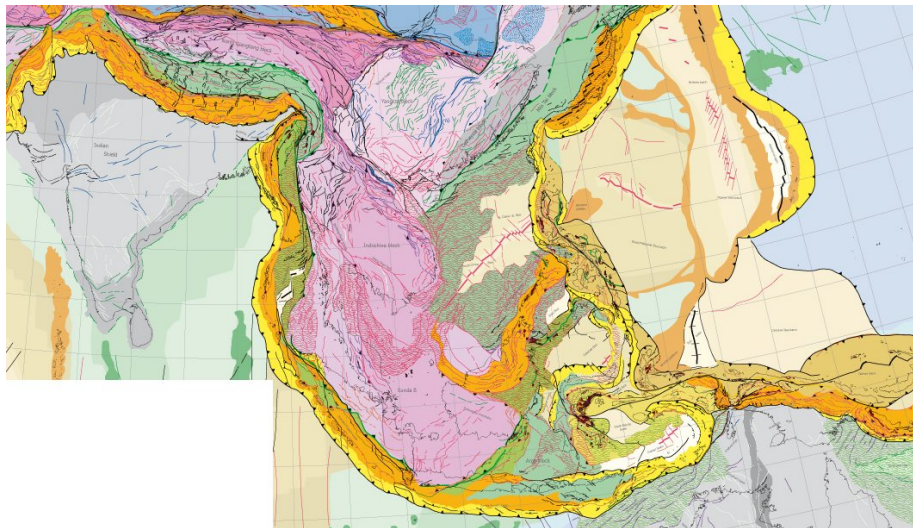
Indo-Pacific: temperatures



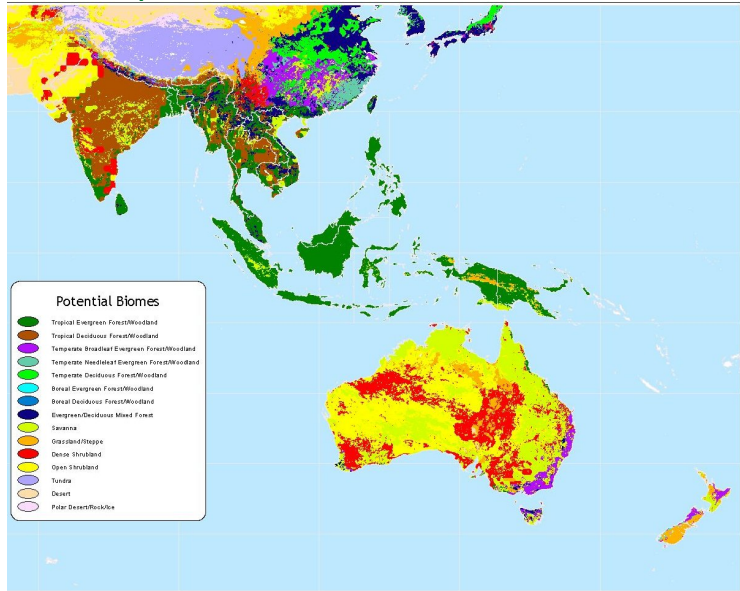
Indo-Pacific: precipitation



Indo-Pacific geology: the “giant puzzle”



Indo-Pacific: potential biomes



Indo-Pacific: biogeographical regions and Wallace line



Indo-Pacific: 8 biogeographical regions

1. North India
2. Deccan Plateau and South India
3. Indochina
4. Malay archipelago
5. Wallacea
6. New Guinea and Melanesia
7. Coral Pacific Islands
8. Volcanic Pacific Islands



Indo-Pacific regions: key features

1. **North India:** Asian lions (*Panthera leo persica*) and tigers (*Panthera tigris*)
2. **Deccan Plateau and South India:** the most “African” fauna outside of Africa, e.g., Asian elephant (*Elephas maximus*), Indian rhinoceros (*Rhinoceros unicornis*) and multiple species of antelopes like gazelles (*Gazella gazella*); also, many “true” Asian elements like king cobra (*Ophiophagus hannah*), the largest venomous snake



Summary for Indo-Pacific

- ▶ Geological “puzzle”, region with extremely complex history
- ▶ Humid and rich
- ▶ Numerous borders (like Wallace line) and connections (like Madagascar / Indonesia disjunctions)



For Further Reading



A. Shipunov.

Biogeography [Electronic resource].

2014—onwards.

Mode of access:

http://ashipunov.info/shipunov/school/biol_330



South Asia.

http://en.wikipedia.org/wiki/South_Asia



Southeast Asia.

http://en.wikipedia.org/wiki/Southeast_Asia



Oceania.

<http://en.wikipedia.org/wiki/Oceania>

