

Systematic Botany. Lecture 40

Alexey Shipunov

Minot State University

December 9, 2011

Outline

Angiosperms

Asteridae, part 2

Angiosperms

Asteridae, part 2

Ordo 37. ASTERALES [⁴*Aster*]Subordo *Campanulineae* [^{3,8}*Campanula*]Familia 1(302). *Rousseaceae* DC. [³*Roussea*] s.a.¹⁵⁹2(303). *Pentaphragmataceae* J. Agardh [³*Pentaphragma*]3(304). *Campanulaceae* Juss. [³*Campanula*]¹⁶⁰Subordo *Alseuosmiineae* [^{3,8}*Alseuosmia*]Familia 4(305). *Alseuosmiaceae* Airy Shaw [³*Alseuosmia*]¹⁶¹5(306). *Phellinaceae* (Loes.) Takht. [³*Phelline*]6(307). *Argophyllaceae* (Engl.) Takht. [³*Argophyllum*]¹⁶²Subordo *Asterineae* [^{3,8}*Aster*]Familia 7(308). *Stylidiaceae* R. Br. [³*Stylidium*] sed.m.¹⁶³8(309). *Menyanthaceae* Dumort. [³*Menyanthes*]9(310). *Goodeniaceae* R. Br. [³*Goodenia*]¹⁶⁴10(311). *Compositae* Giseke [³*Aster*] s.a.¹⁶⁵

Ordo 39. LAMIALES [⁴*Lamium*]* s.a.Subordo **Solanineae** [^{3,8}*Solanum*]

- Familia 1(317). *Vahliaceae* Dandy [³*Vahlia*]
 2(318). *Boraginaceae* Juss. [³*Borago*] s.a.¹⁶⁸
 3(319). *Montiniaceae* Nakai [³*Montinia*]¹⁶⁹
 4(320). *Sphenocleaceae* (Lindl.) Baskerville [³*Sphenoclea*]
 5(321). *Convolvulaceae* Juss. [³*Convolvulus*]¹⁷⁰
 6(322). *Solanaceae* Juss. [³*Solanum*] s.a.¹⁷¹
 7(323). *Hydroleaceae* Dumort. [³*Hydrolea*]

Subordo **Oleineae** [^{3,8}*Olea*]

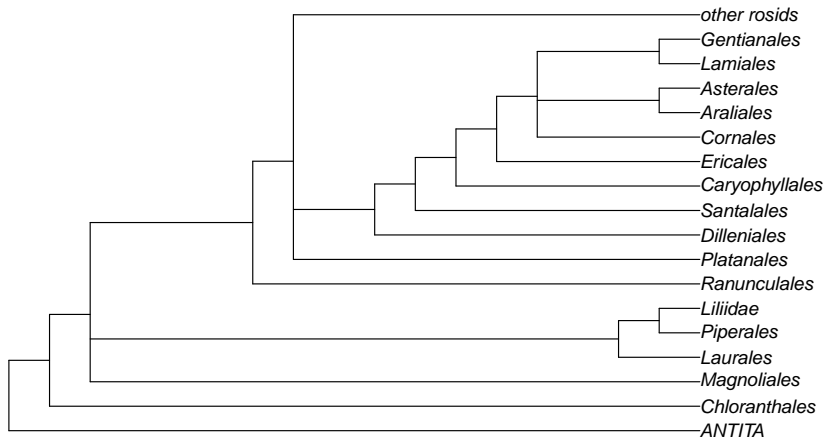
- Familia 8(324). *Plocospermataceae* Hutch. [³*Plocosperma*]
 9(325). *Oleaceae* Hoffmanns. et Link [³*Olea*]¹⁷²
 10(326). *Carlemaniaceae* Airy Shaw [³*Carlemania*]

Subordo **Lamiineae** [^{3,8}*Lamium*]

- Familia 11(327). *Tetrachondraceae* Wettst. [³*Tetrachondra*]¹⁷³
 12(328). *Gesneriaceae* Rich. et Juss. ex DC. [³*Gesneria*]¹⁷⁴
 13(329). *Plantaginaceae* Juss. [³*Plantago*] s.a.¹⁷⁵
 14(330). *Scrophulariaceae* Juss. s.a. [³*Scrophularia*]*¹⁷⁶
 15(331). *Stilbaceae* Kunth [³*Stilbe*]¹⁷⁷
 16(332). *Linderniaceae* (Rechb.) Borsch et K. Mueller et
 Eb. Fisch [³*Lindernia*]
 17(333). *Byblidaceae* (Engl.) Domin [³*Byblis*]
 18(334). *Pedaliaceae* R. Br. [³*Pedaliium*]¹⁷⁸

- 19(335). *Acanthaceae* Juss. [³*Acanthus*]¹⁷⁹
- 20(336). *Bignoniaceae* Juss. [³*Bignonia*]¹⁸⁰
- 21(337). *Lentibulariaceae* Rich. [³*Utricularia*']
- 22(338). *Verbenaceae* J. St.-Hil. [³*Verbena*] p.p.¹⁸¹
- 23(339). *Labiatae* Juss. [³*Lamium*]¹⁸²
- 24(340). *Phrymaceae* Schauer [³*Phryma*]¹⁸³
- 25(341). *Paulowniaceae* Nakai [³*Paulownia*]
- 26(342). *Orobanchaceae* Vent. [³*Orobanche*] s.a.¹⁸⁴

Ordo 40. GENTIANALES [⁴*Gentiana*]Subordo *Rubiineae* [^{3,8}*Rubia*]Familia 1(343). *Rubiaceae* Juss. [³*Rubia*]¹⁸⁵Subordo *Gentianineae* [^{3,8}*Gentiana*]Familia 2(344). *Loganiaceae* R. Br. ex Mart. [³*Logania*] s.a.¹⁸⁶3(345). *Gentianaceae* Juss. [³*Gentiana*] s.a.¹⁸⁷4(346). *Apocynaceae* Juss. [³*Apocynum*] s.a.¹⁸⁸5(347). *Gelsemiaceae* (G. Don) Struwe et V. A. Albert
[³*Gelsemium*]¹⁸⁹



Final questions

Final questions

Short anonymous voluntary survey:

1. What do you like most in botany course?
2. What do you dislike most in botany course?
3. Which lab do you remember most of all?
4. Please grade (1—bad, 5—excellent):
 - 4.1 Lectures
 - 4.2 Labs
 - 4.3 Final questions
 - 4.4 Exams
5. Are you interesting in doing directed research in botany?

For Further Reading



Shipunov, A. 2011–onwards.

Systematic Botany [Electronic resource]. Mode of access:

http://ashipunov.info/shipunov/school/biol_448/index.htm